

PP51B-2133

Michael Wallace

Excerpts AGU poster 2012

Initial papers reviewed include

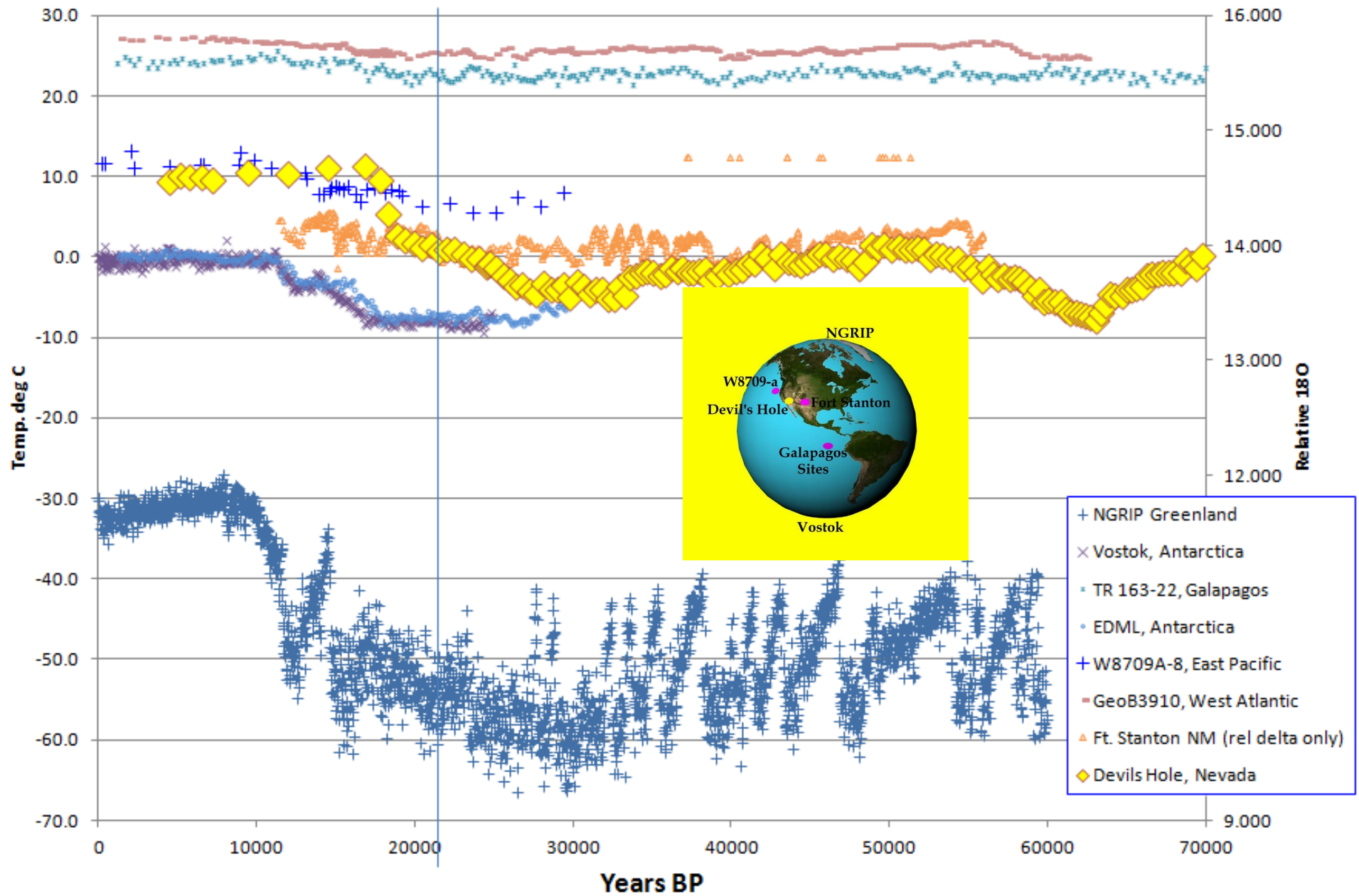
5. Isaac J. Winograd and W. Thordarson, 1975, "Hydrogeologic and Hydrochemical Framework, South Central Great Basin, Nevada-California; With Special Reference to the Nevada Test Site". USGS Professional Paper 712.

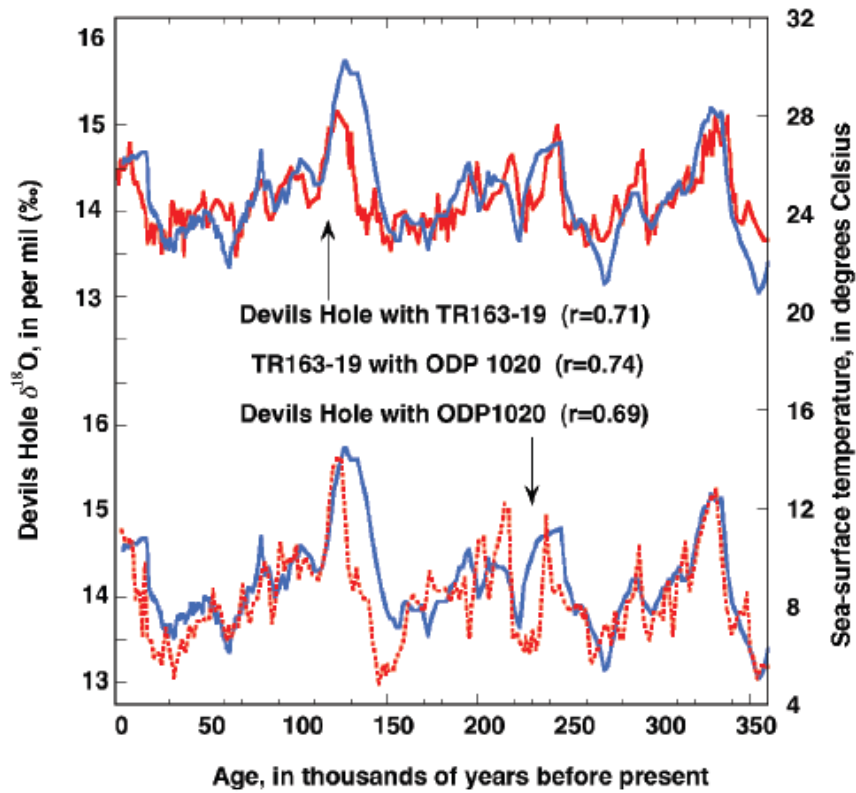


The Devil's Hole is a marsh in an arid corner of North America. A portion of the spring is covered by a cage for aquatic protection. Vein Calcite was extracted and analyzed by USGS scientists, towards comparative dating against other locations to interpret interglacial cycle timing over the past several hundred thousand years.

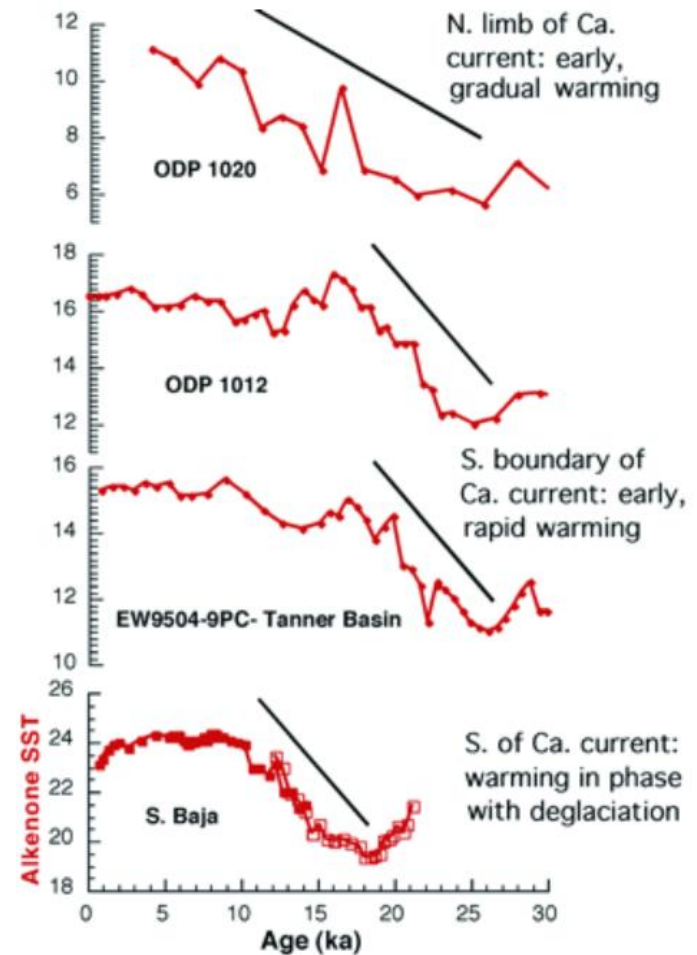
Thoughts by 2018. The colder time series in particular appear to be **ERGODIC** with the **THERMOCLINE**.

Selected Proxy Timelines





Devils Hole and an ocean proxy paleotemperature time series over several hundreds of thousand years.



Interglacial onset lags and rates for samples across the globe of paleotemperature time series data.

Source of Figures: J. M. Landwehr and I.J. Winograd, 2011, "A Devils Hole Primer". US Geological Survey. <http://water.usgs.gov/nrp/devils.html>